

CLIMATE & ECOLOGICAL EMERGENCY

Antony Littlechild | Dorset Council



Climate Emergency Declaration

**May 2019 – Dorset Council declared a
Climate & Ecological Emergency**

But what does this mean?

- **Taking direct action** to reduce our own carbon footprint to net zero
- **Supporting & influencing** Dorset's communities & organisations to reduce emissions
- **Working with partners** to develop our climate emergency plan



Understanding the challenge



Set-up Executive Advisory Panel



Established a Technical Officer Working Group



Started developing a Climate Action Plan



Understanding the challenge



Set-up Executive Advisory Panel



Established a Technical Officer Working Group



Started developing a Climate Action Plan

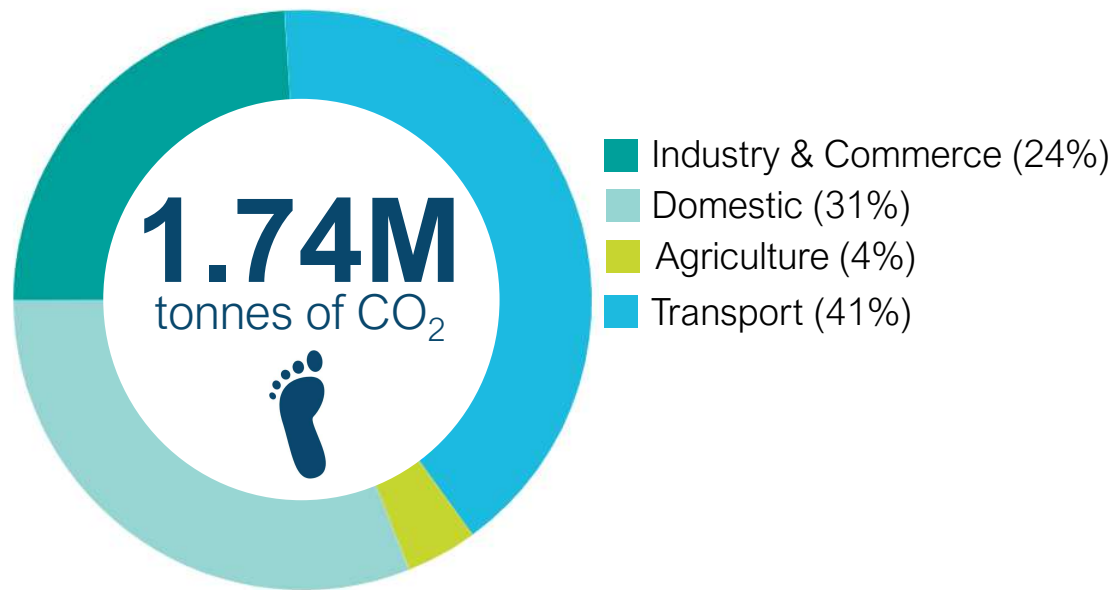


Climate change risk assessments



Understanding Dorset

DORSET AREA FOOTPRINT



 **376,480**
residents

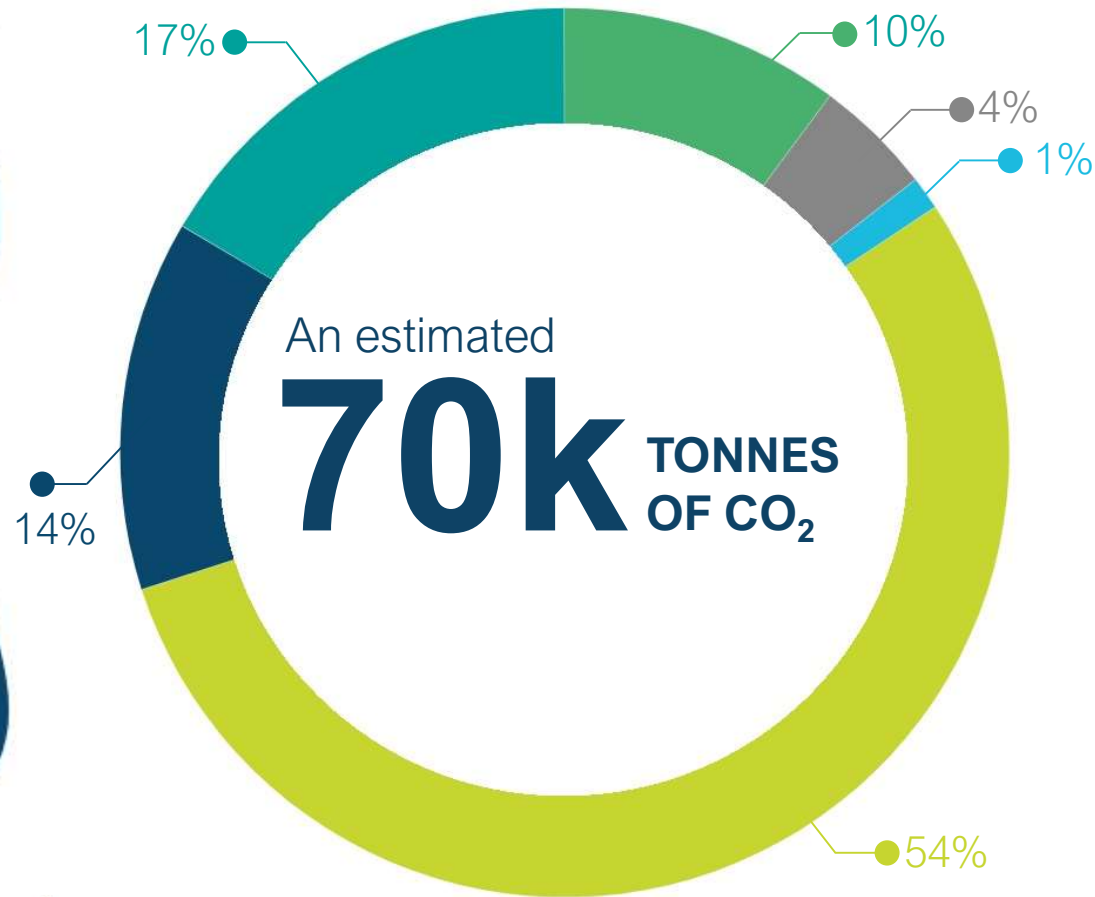
 **158,738**
households

 **20,000**
businesses

46% of our population
live in rural areas

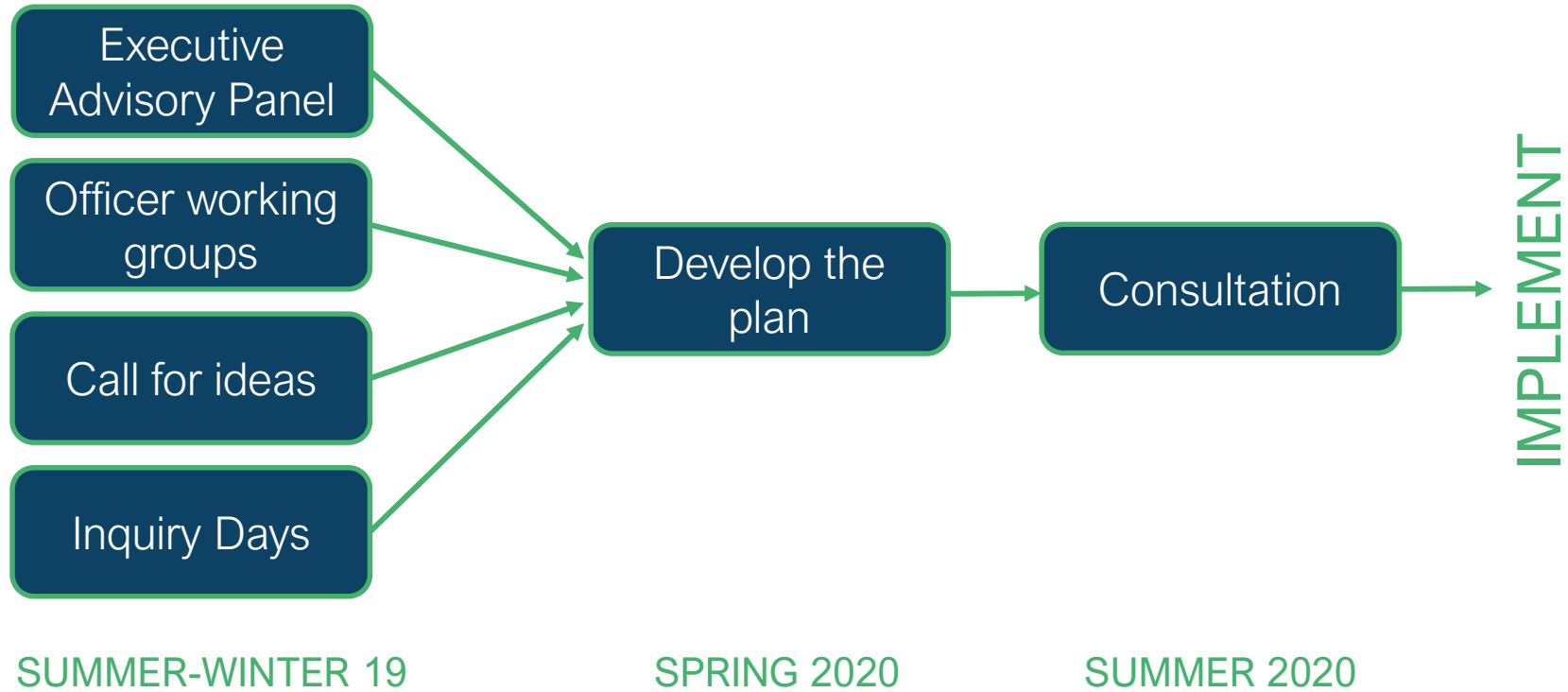


Dorset Council



- Waste
- Buildings
- Commuting
- Streetlights
- Transport (fleet)
- Transport (business)

Developing a Plan



Emerging priorities

Direct

- Dorset Council buildings & assets
- Dorset Council fleet
- Dorset Council waste
- Biodiversity
- Staff behaviour
- Policy framework

Indirect

- Planning policy
- Sustainable travel
- Building control
- Community services
- County farms & countryside estates

Influence

- Working with partners
- Community engagement
- Regional strategies
- Residents behaviour
- Pan Dorset Local transport plan

Regional / national



Continued engagement on regional leadership and action

- ADEPT, LGA, LNP, LEP, SW Energy Hub, other Local Authorities



And on national collaboration and lobbying

- Need for National support – Resources, Changes to current policy to support transition to LC future
- Clarity on national direction/policy – e.g. Decarbonisation of Heat, Futures homes strategy, agriculture,

